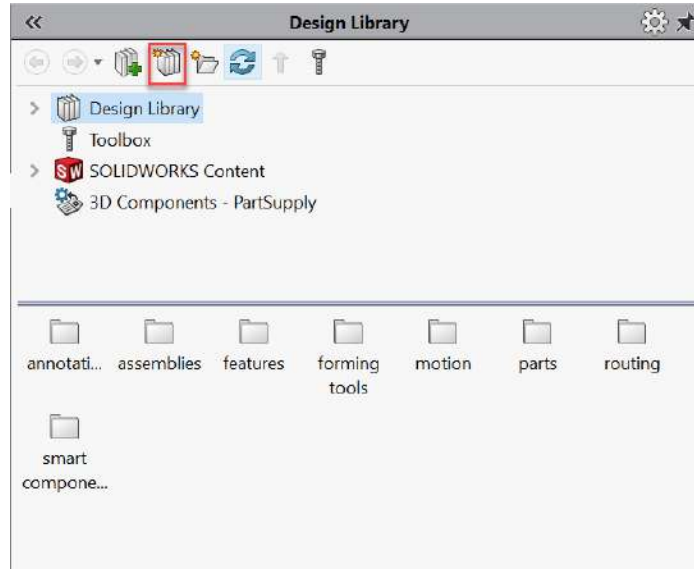
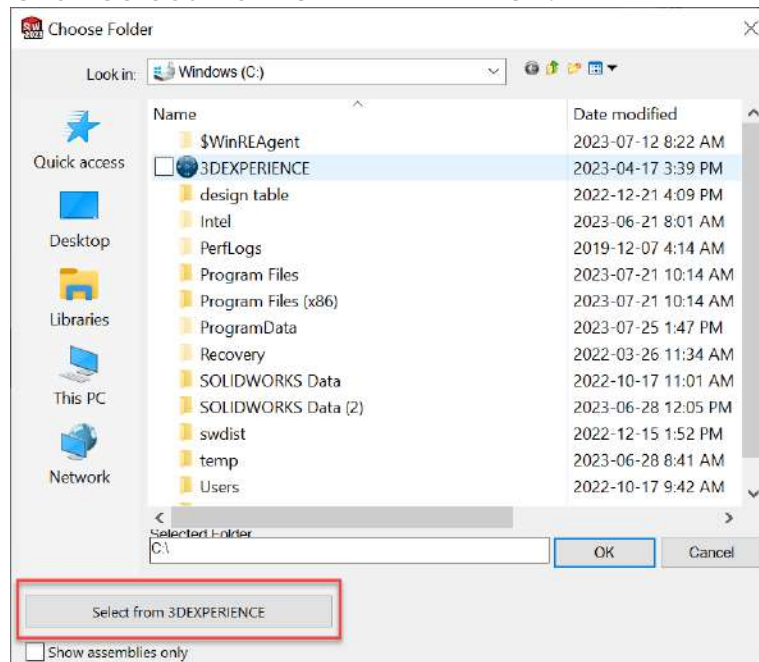


How to Create a 3D Experience Library Feature

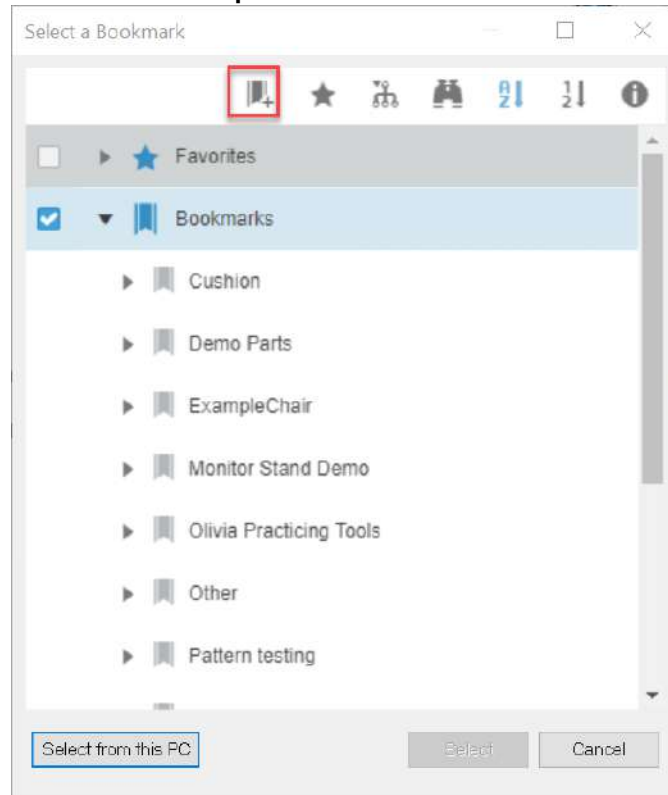
1. Add a new library file location
 - a. Open solidwork (make sure you are logged in to the platform) and navigate to the library add-in menu. Then click the Add file location Icon.



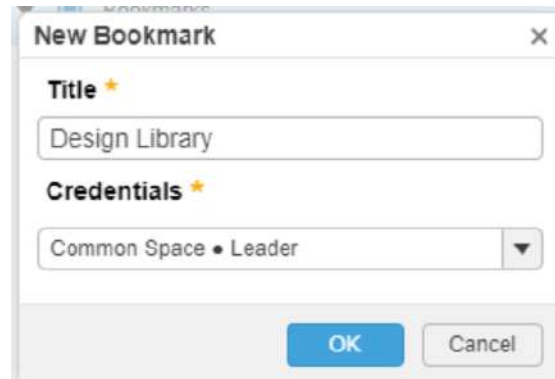
- b. You will get a pop-up window prompting you select a folder. Click Select from 3DEXPERIENCE.



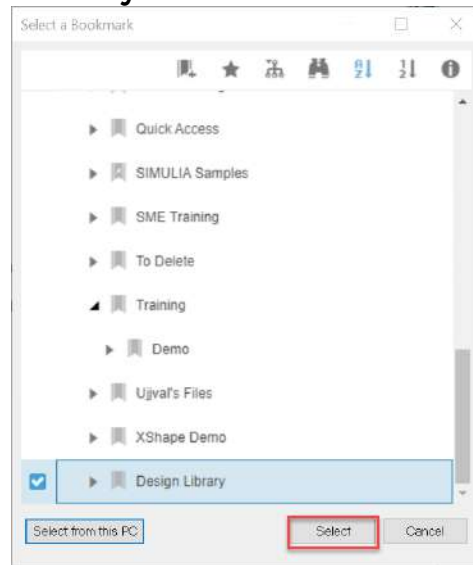
- c. Select the bookmark you would like to save the design library to or create a new one. **Design Library require at least one sub folder so make sure your bookmark contains at least one sub bookmark.**
 - i. To create a new bookmark make sure you have selected **Bookmark** to make a new top level bookmark or an existing bookmark to make a sub bookmark. Then Click the ribbon with a plus



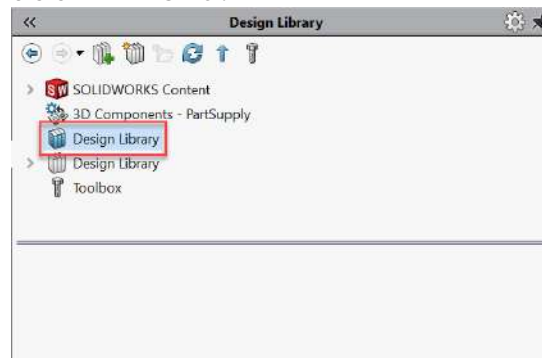
- ii. Select the Calaborative Space you want the bookmark to be in. Most likely you want to choose the common space because you will be saving design library parts here. Fill in the **Bookmark Name**. Then click ok.



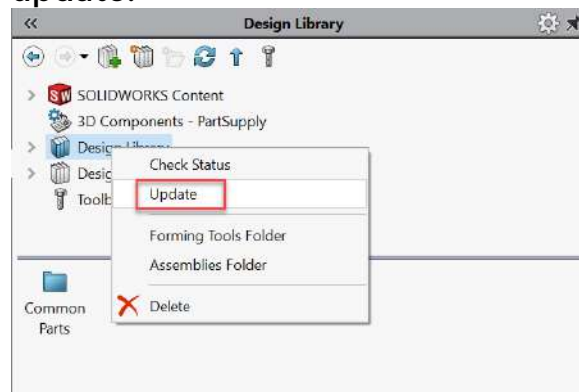
iii. Select your bookmark and click select



iv. You will see the Bookmark as a new option in the libraries add-in menu.

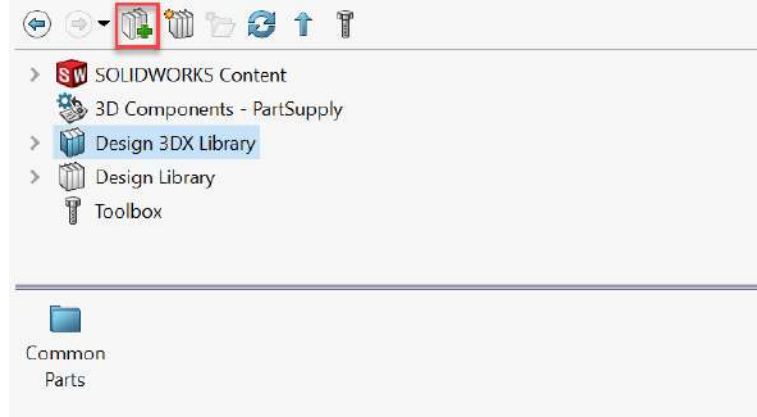


v. To add further organization to the Design library you can create sub bookmarks. To get the sub bookmarks to appear you just need to right click the library and click update.

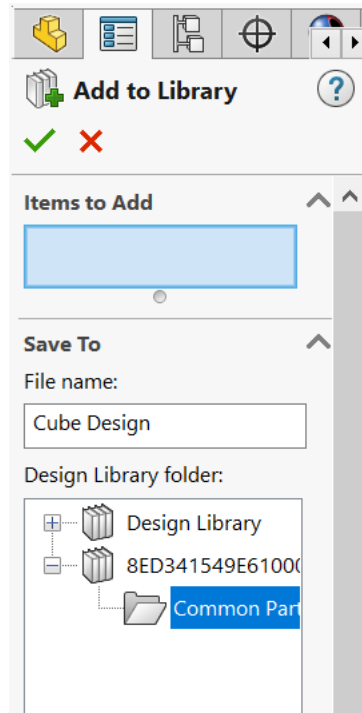


d. Add a library part

- i. Open the library part you want to add. Then click the add to library button in the add-in menu



- ii. Select the design library you want the part to be located in (the bookmarks names from the platform show up as a weird combination of letters and numbers) but the sub bookmarks have the proper names. Fill in the information and then click the check mark.



Now you are ready to start using your design library from the cloud.